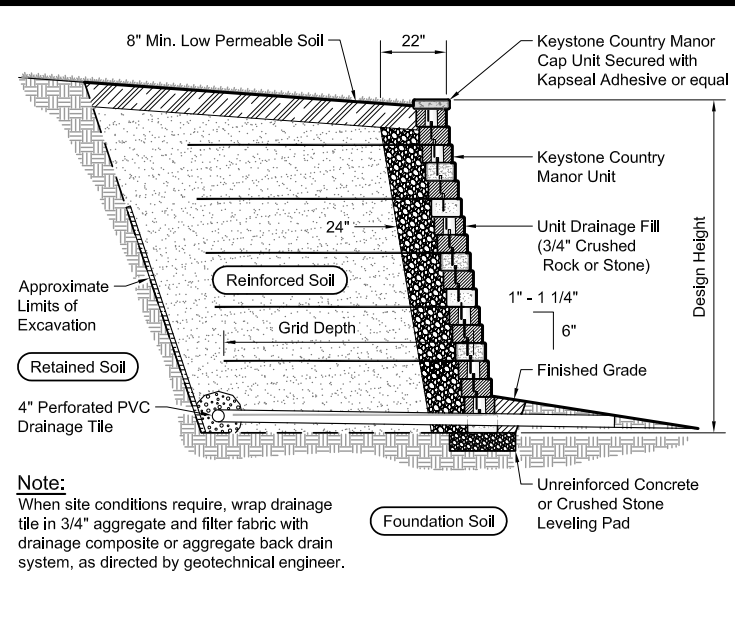
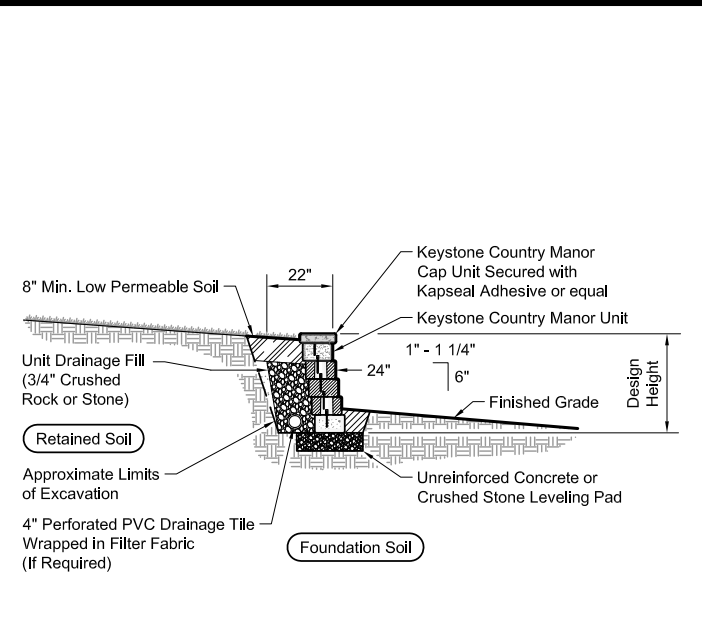


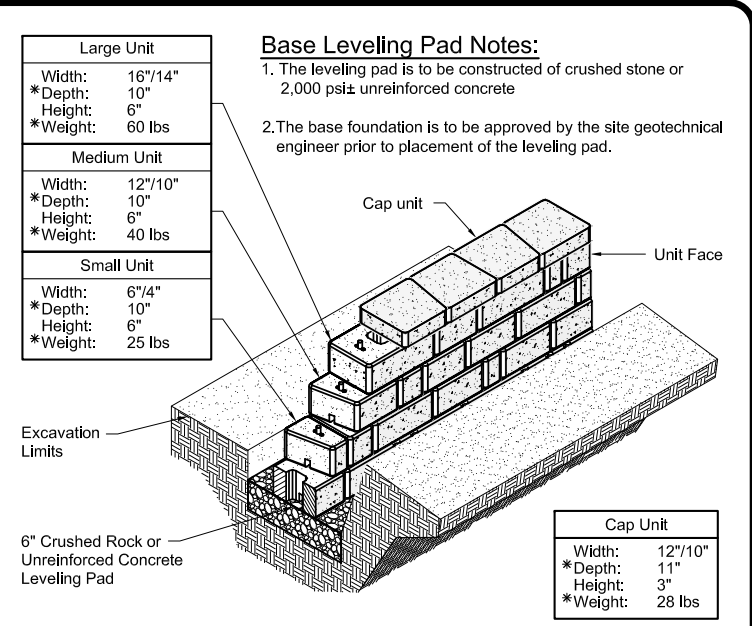
**Typical Reinforced Wall Section**  
Country Manor Unit - Near Vertical Setback



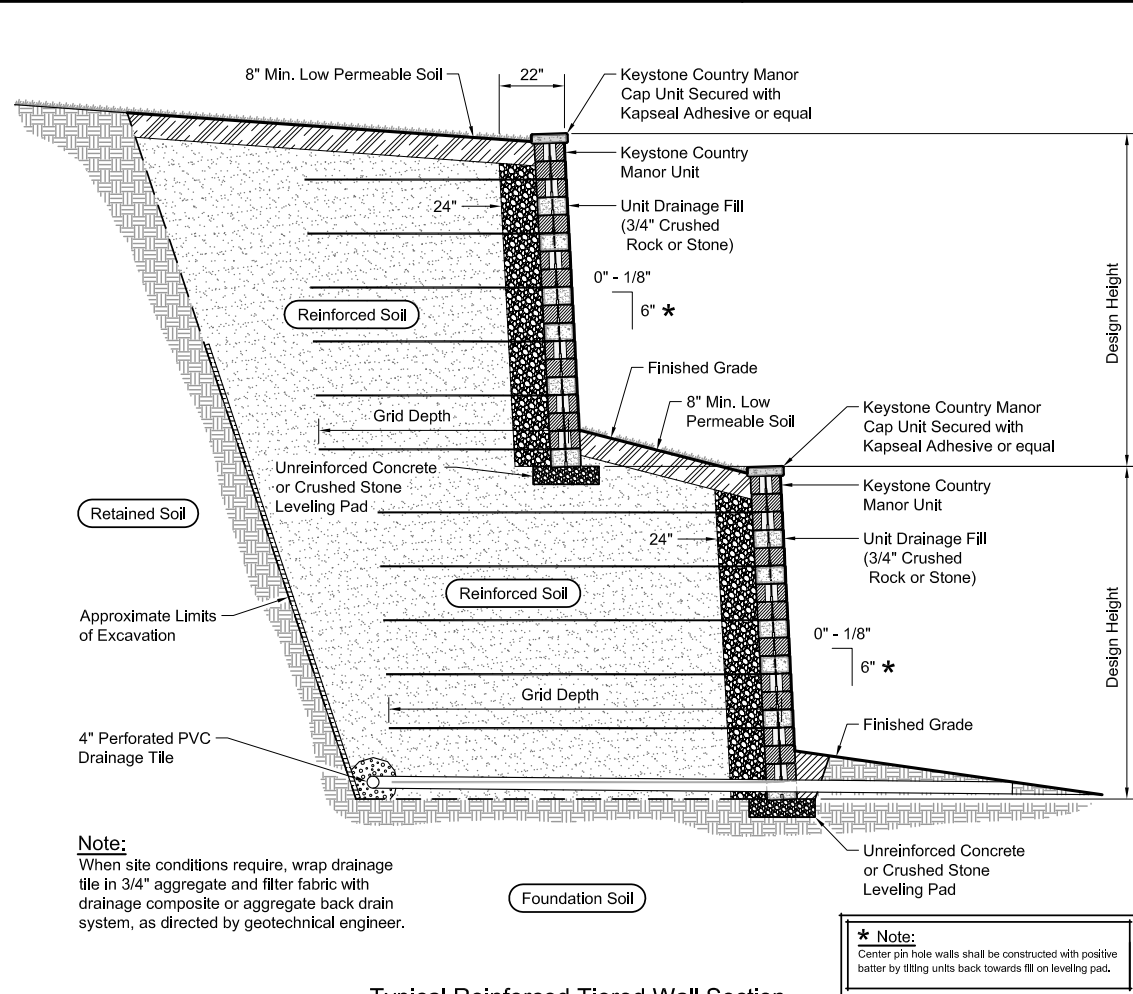
**Typical Reinforced Wall Section**  
Country Manor Unit - 1" Setback



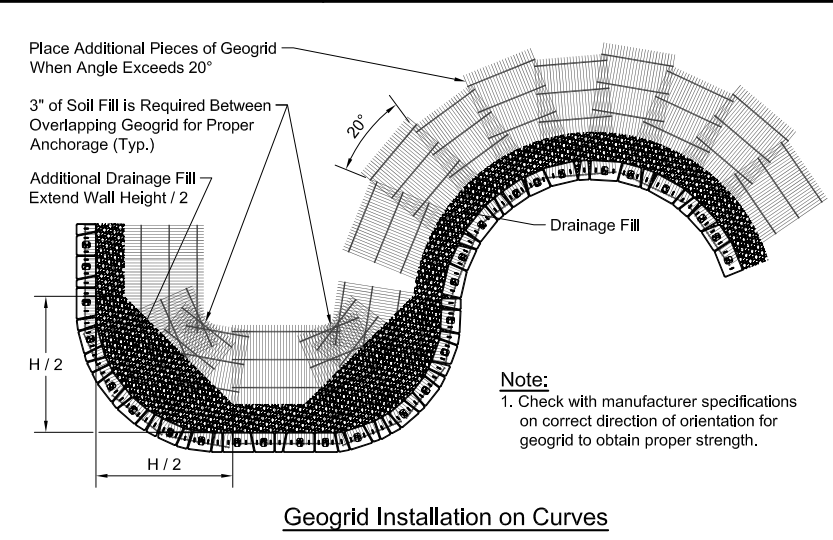
**Typical Gravity Wall Section**  
Country Manor Unit - 1" Setback



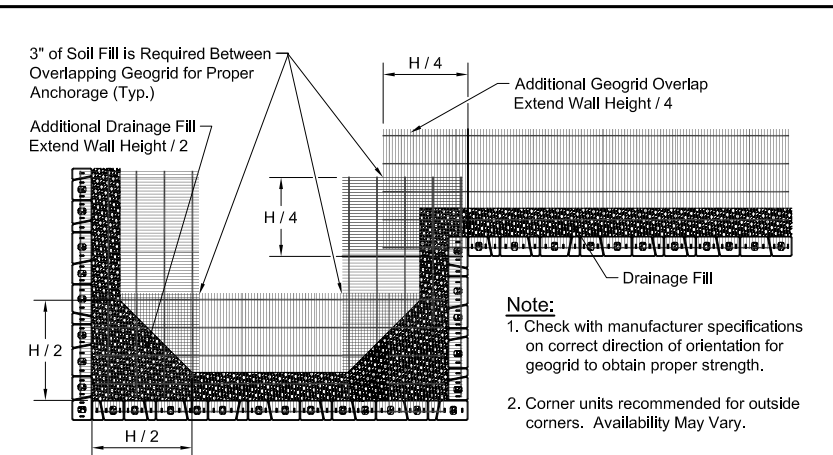
**Country Manor Unit/Base Pad Isometric Section View**  
\* Dimensions & Weight May Vary by Region



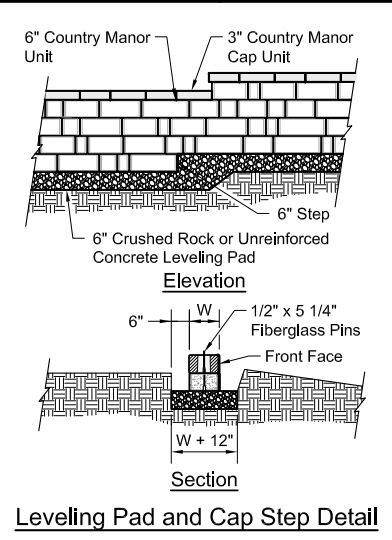
**Typical Reinforced Tiered Wall Section**  
Country Manor Unit - Near Vertical Setback



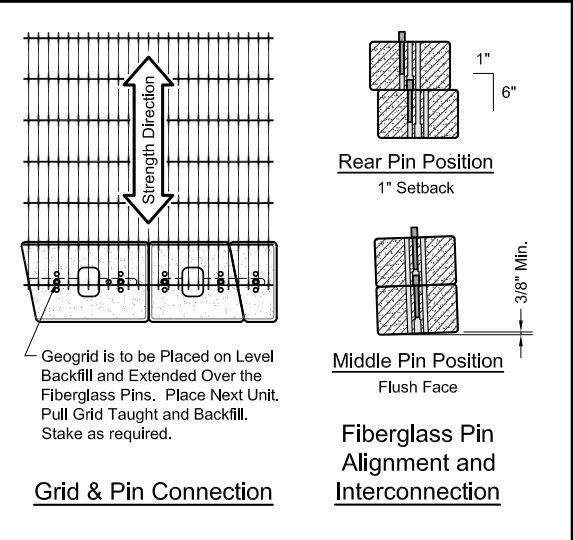
**Geogrid Installation on Curves**



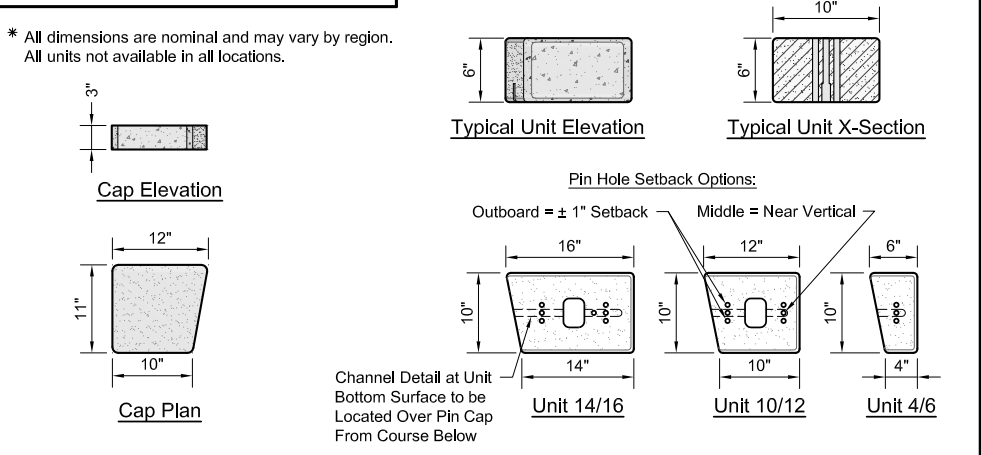
**Geogrid Installation at Corners**



**Leveling Pad and Cap Step Detail**



**Grid & Pin Connection**



**Country Manor Cap Unit**

**Country Manor Unit Sizes**

Copyright 2018 Keystone Retaining Wall Systems

Design is for internal stability of the KEYSTONE wall structure only. External stability, including but not limited to foundation and slope stability is the responsibility of the Owner. The design is based on the assumption that the materials within the retained mass, methods of construction, and quality of materials conform to KEYSTONE's specification for this project.

This drawing is being furnished for this specific project only. Any party accepting this document does so in confidence and agrees that it shall not be duplicated in whole or in part, nor disclosed to others without the consent of Keystone Retaining Wall Systems, Inc.

No.	Date	Revision	By

**KEYSTONE**  
HARDSCAPES

4444 W 78th Street  
Minneapolis, MN 55435  
952-897-1040

Designed By: RKM	Title: Keystone Stonegate Country Manor	Date: 01-04-18
Checked By: CDM	Project: Keystone Retaining Wall Systems Typical Wall Details	Project No:
Scale: No Scale		Drawing No: